

Monolithic crystal filter

MQF45.0-1600/02



Application

- 4 pol filter
- i.f.- filter
- use in mobile and stationary transceivers

Limiting values

		Unit	Value
Center frequency	f_0	MHz	45.0
Insertion loss		dB	≤ 3.0
Pass band at 3.0 dB		kHz	± 8.00
Ripple in pass band	$f_0 \pm 5.00$ kHz	dB	≤ 1.0
Stop band attenuation	$f_0 \pm 25$ kHz	dB	≥ 30
Alternate attenuation	$f_0 - 910$ kHz	dB	> 90

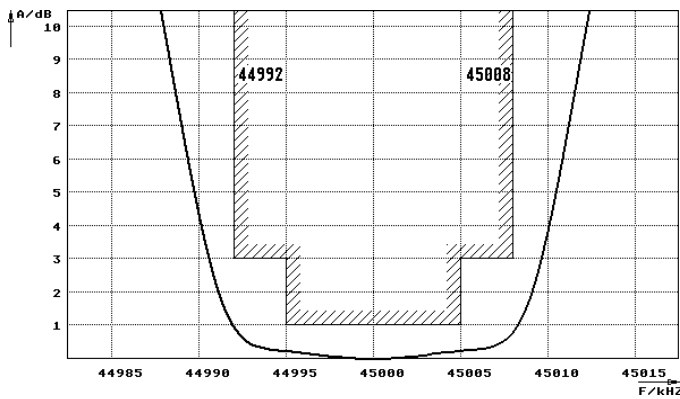
Terminating impedance Z

R1 C1		Ohm/pF	700 2
R2 C2		Ohm/pF	700 2
Coupling capacitance	Ck	pF	9.0

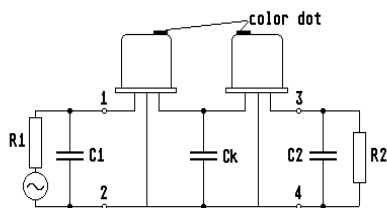
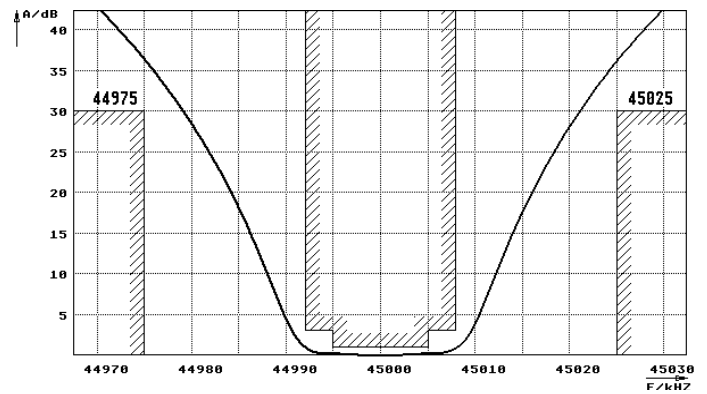
Operating temp. range ° C -25... +70

Characteristics MQF45.0-1600/02

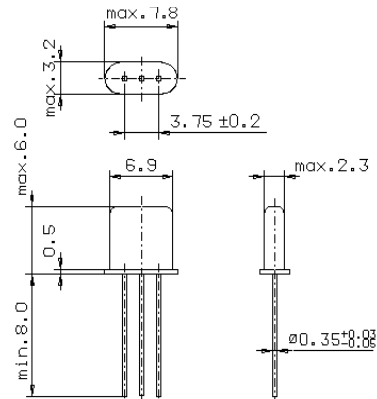
Pass band



Stop band



Pin connections: 1 Input
2 Input-E
3 Output
4 Output-E



GH12